



Arden

Arden A

- Available from 2851 - 4190 sqft
- 4 Bedrooms
- 2.5 - 3.5 Bathrooms
- Optional Third Floor
- 9' First Floor Ceilings
- Poured Concrete Foundation



ARDEN B



SCHAEFFER
FAMILY HOMES

Please see reverse side for floor plan.

www.schaefferhomes.com



Arden

Opt Sliding Glass Door





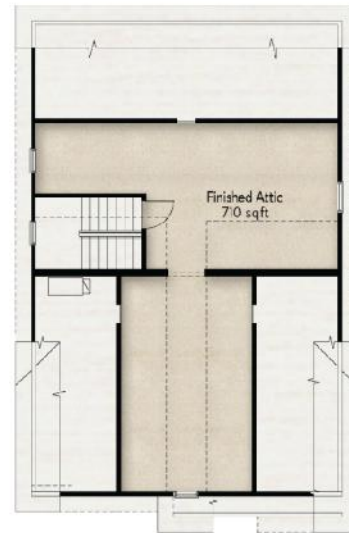
First Floor



Second Floor



Opt Finished Basement



Opt Third Floor